

SOLAR LED TRAFFIC SIGN INSTALL GUIDE

Required Tools & Items:

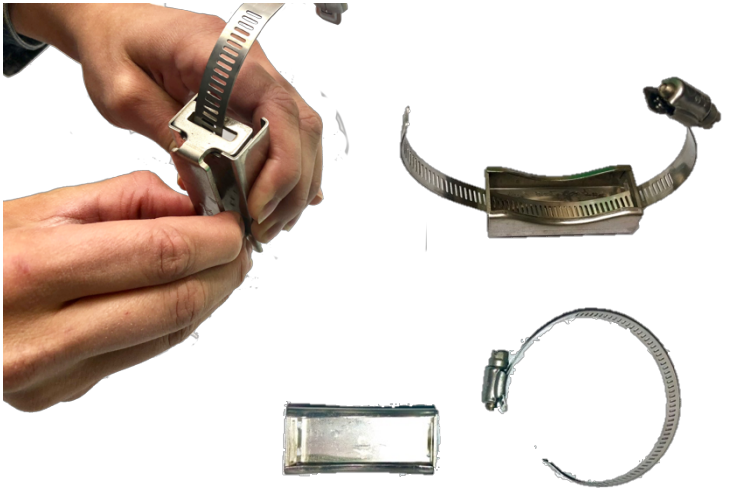
- Flat head screw driver
- Pole (to mount sign on)

What your order includes:

- 1) Sign
- 1) Junction box
- 3) Metal band ties
- 3) Slider brackets
- 1) Solar panel

For back to back, timer, push button and upgraded; accessories & tools same as above with additional:

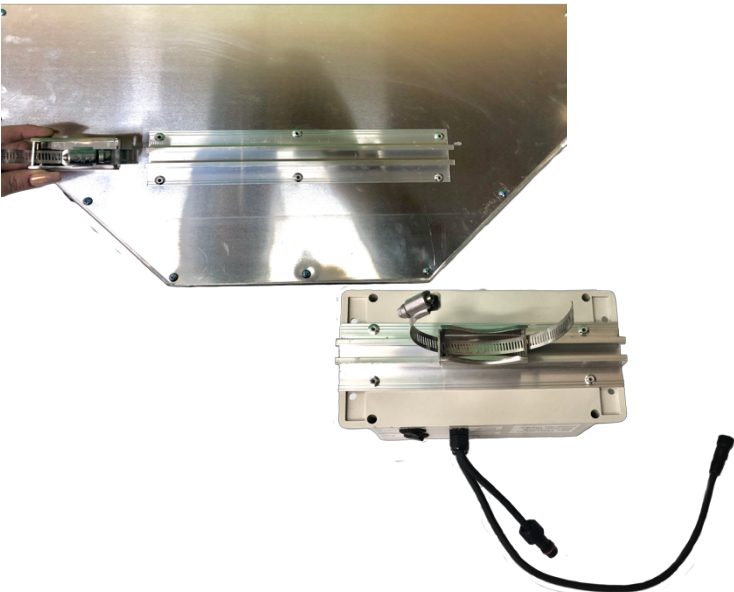
- 1) Metal band tie
- 1) Slider bracket



Step 1:

Slide metal band through both slots on the metal slider. Repeat this for all bands & sliders. (Do not thread through to complete the circle, leave open for install onto pole).

Note: Please make sure the curve of the band matches with the curve of the slider below threading through. The curved side will face the pole to create a tighter grip.



Step 2:

Slide 1 metal band & slider bracket into the channels on the back of the sign (1 for the top channel & 1 for the bottom channel)

Note: For back-to-back signs, put 2 slider brackets per metal band. Slide into channels on back of both signs. Continue to next steps.

Step 3:

Slide the remaining metal band & slider combo into channel on the back of the junction box.

SOLAR LED TRAFFIC SIGN INSTALL GUIDE

Step 4:

Take the sign (with bands & sliders on the back) and line up with the pole it will be installed on. Take the top metal band and thread it through itself to gain grip before tightening. Proceed to tighten the top band with a flat head screw driver so it is flush with the pole—does not need to be fully tight so adjustments can be made after the bottom band is tightened.

Note: This step is easier with extra hands!

Step 5:

While supporting the sign in position, tighten the bottom metal band with the flat head screwdriver. Tighten until just shy of maximum hold (this allows for adjustments).

Adjust the sign so it sits straight—tighten to max capacity to ensure the sign's weight is supported properly.

Note: If installing back to back junction box, timer junction, push button, radar or general upgraded accessories please **skip to step 9**

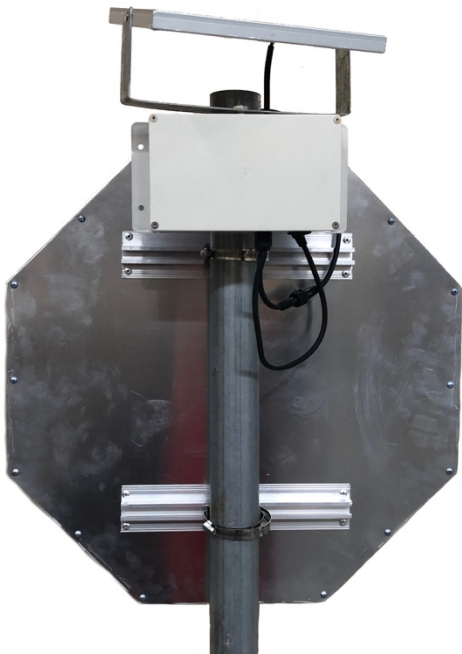
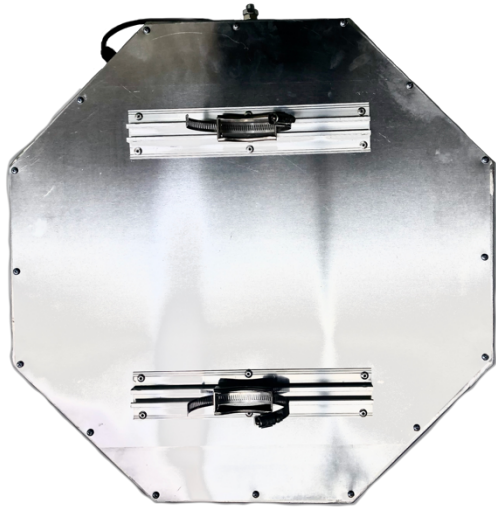
Step 6:

Place the junction box above/ behind the sign (can be on same side as the sign or on the back of the pole)—tighten the metal band around the pole to secure in place.

Note: Please make sure the cords from the sign are able to reach the junction box.

Step 7:

Connect the solar panel to junction box cord and mount on top junction box (where screw is located). Make sure it's in the direction of optimal sunlight.



SOLAR LED TRAFFIC SIGN INSTALL GUIDE



Step 8:

Keep the sign off for the first day to establish initial charge. Once done, switch the sign buttons on in accordance with your desired light settings.

FOR UPGRADED JUNCTION BOXES (BACK TO BACK WITH TIMER, TIMER, PUSH BUTTON, RADAR & SOLAR PANEL UPGRADE) ONLY:

Step 9:

Follow steps as normal except solar panel and junction boxes have separate mounts. Mount junction box behind sign (towards the top). Connect cords.

Please Note: For radar activation junction boxes, mount on the front side above the sign to activate radar for sign

Step 10:

Take nut, bolt and small “u” shaped bracket and attached to solar panel (where hole is). Mount above junction box with separate mounting band provided. Let charge one full day then switch functions to desired operation.

